

UNITECH™

DI PIPES & FITTINGS MFG.



ISO: 2531
BS EN 545
BS EN 598

ISO: 9001
ISO: 14001
OHSAS 18001



www.unitechdip.com

Total Valve Solutions

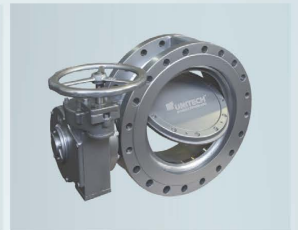
BUTTERFLY VALVES : Centric Disc Design (Wafer / Lugged & Double Flanged)
 SIZE RANGE : DN40 – DN1200
 PRESSURE RATING : PN6 – PN25, DN600 and above Max PN10
 TEMPERATURE : -250°C to +200°C (Encapsulated Disc)
 OPERATOR : HL / GB / Pneumatic Actuator / Electrical Actuator
 SEAT : NBR / EPDM / SILICON / PTFE (Lined)
 MOC : CI / SGI / WCB / CF8 / CF8M / CF3M / CD4MCUN



BUTTERFLY VALVES : High Performance Double Eccentric (Wafer / Lugged & Double Flanged)
 SIZE RANGE : DN50 - DN600 (#150 and #300) and up to DN2800
 TEMPERATURE : -50°C to +220°C (PTFE / CFT / GFT)
 TEMPERATURE : -50°C to +600°C (Metal Seated)
 PRESSURE RATING : PN6 to PN16
 SEAT : NBR / EPDM / SILICON
 OPERATOR : HL / GB / Pneumatic Actuator / Electrical Actuator
 MOC : CI / SGI / WCB / CF8 / CF8M / CF3M / CD4MCUN



BUTTERFLY VALVES : Triple Offset (Wafer / Lugged / Flanged)
 SIZE RANGE : DN80 – DN1800
 TEMPERATURE : -50°C to +540°C
 PRESSURE RATING : PN #150
 OPERATOR : HL / GB / Pneumatic Actuator / Electrical Actuator
 SEAT : NBR / EPDM / SILICON / PTFE / METAL SEATED
 MOC : CI / SGI / WCB / CF8 / CF8M / CF3M / CD4MCUN



CHECK VALVE : Wafer Type Single Plate
 SIZE RANGE : DN25 – DN900
 TEMPERATURE : -25°C to +180°C
 PRESSURE RATING : PN6 to PN16
 SEAT : NBR / EPDM / PTFE
 MOC : CI / SGI / WCB / CF8 / CF8M / CF3M / CD4MCUN



BALL VALVES : Floating type, 2PC, 3PC, FB / RB, Flanged Ends, Screwed / Socket Butt weld
 SIZE RANGE : DN15 – DN300
 PRESSURE RATING : #150, #300, #600, #800
 OPERATOR : HL / GB / Pneumatic Actuator / Electrical Actuator
 SEAT : PTFE / RPTFE / PEEK / METAL SEATED
 MOC : DI / WCB / CF8 / CF8M / CF3M
 EXTENDED STEM : UP to 250mm, Special length on request.



BALL VALVES : Trunnion Mounted, 2/3 Pc, FB / RB, Flanged Ends
 SIZE RANGE : DN15 – DN50
 PRESSURE RATING : #150, #300, #600
 OPERATOR : HL / GB / Pneumatic Actuator / Electrical Actuator
 SEAT : PTFE / RPTFE / PEEK / METAL SEATED
 MOC : DI / WCB / CF8 / CF8M / CF3M



BALL VALVES : 3 Way Floating/Jacketed Floating Type, Single Pc, FB / RB, Flanged / Screwed - Ends
 SIZE RANGE : DN15 – DN300
 PRESSURE RATING : #150, #300, #600, #800
 OPERATOR : HL / GB / Pneumatic Actuator / Electrical Actuator
 SEAT : PTFE / RPTFE / PEEK / METAL SEATED
 MOC : DI / WCB / CF8 / CF8M / CF3M



<p>GATE VALVES : Bolted Bonnet, Pressure seal Bonnet, Outside screw & Yoke</p> <p>SIZE RANGE : DN50 – DN1200</p> <p>PRESSURE RATING : #150, #300, #600, #900, #1500, #2500</p> <p>OPERATOR : HL / GB / Pneumatic Actuator / Electrical Actuator / Chain wheel</p> <p>SEAT : EPDM / METAL SEATED</p> <p>MOC : DI / WCB / CF8 / CF8M / CF3M</p>	
<p>GLOBE VALVES : Bolted Bonnet, Pressure seal Bonnet, Outside screw & Yoke</p> <p>SIZE RANGE : DN50 – DN600</p> <p>PRESSURE RATING : #150, #300, #600, #900, #1500, #2500 and above.</p> <p>OPERATOR : HL / GB / Pneumatic Actuator / Electrical Actuator / Chain wheel</p> <p>SEAT : EPDM / METAL SEATED</p> <p>MOC : DI / WCB / CF8 / CF8M / CF3M</p>	
<p>VALVE TYPE : Resilient Seated Gate valve</p> <p>SIZE RANGE : DN40 – DN800</p> <p>PRESSURE RATING : PN10, PN16, PN25</p> <p>SEAT : EPDM / METAL SEATED</p> <p>MOC : Ductile Iron</p> <p>FACE TO FACE : BS 5163 (EN 558-1 Series 3) , DIN 3352 F4 , AWWA C 515</p> <p>COATING : 300µm FBE coating</p> <p>EXTENDED SPINDLE : Yes (As Per Client's Requirement)</p> <p>PE TAIL : Yes, Flanged Ends, Screwed Ends, Spigot Ends.</p>	
<p>DUAL PLATE CHECK VALVES : Wafer / Flanged Ends, spring loaded soft seat.</p> <p>SIZE RANGE : DN50 – DN1200</p> <p>PRESSURE RATING : #150, #300, #600, PN10, PN16</p> <p>SEAT : EPDM / METAL SEATED</p> <p>MOC : DI / WCB / CF8 / CF8M / CF3M</p>	
<p>LIFT CHECK VALVES : Forged/ Screwed / Socket / Butt weld / Flanged Ends</p> <p>SIZE RANGE : DN15 – DN50</p> <p>PRESSURE RATING : #800, #1500, #2500</p> <p>MOC : WCB / CF8 / CF8M / CF3M</p>	
<p>SWING CHECK VALVES : Bolted Bonnet, Pressure seal Bonnet</p> <p>SIZE RANGE : DN50 – DN1200</p> <p>PRESSURE RATING : #150, #300, #600</p> <p>SEAT : EPDM / METAL SEATED</p> <p>MOC : DI / WCB / CF8 / CF8M / CF3M</p> <p>SPECIAL : Dash pot arrangement for non-slam application</p>	
<p>CHECK VALVES : Swing Type Check Valve</p> <p>SIZE RANGE : DN50 – DN300</p> <p>PRESSURE RATING : PN10, PN16, PN25</p> <p>SEAT : EPDM</p> <p>MOC : Ductile Iron</p> <p>MFG. STANDARD : BS 5153 (EN 558-1), DIN 3202 F6, EN1092-2</p> <p>COATING : 300µm FBE coating</p>	

- Fire Safe Design
- IBR Certified
- Vacuum Service
- Oxygen & Special Service Valves
- Motorized Ball Valve & Pneumatic Valve
- Automation



PRV / PLUG VALVE / FOOT VALVE / CONTROL VALVE

CONTROL VALVE : Adjustable Pressure Reducing and sustaining, Electronic, Float controlled.
 SIZE RANGE : DN50 – DN300
 PRESSURE RATING : PN10, PN16, PN25
 TYPE : Diaphragm type
 MOC : Ductile Iron, WCB, CF8, CF8M
 MFG. STANDARD : BS 5163 (EN 558-1), EN1092-2



PR. RELIEF VALVE : Diaphragm Type
 SIZE RANGE : DN50 – DN300
 PRESSURE RATING : PN10, PN16
 GASKET : EPDM, NBR
 MOC : Ductile Iron
 COATING : 300µm FBE coating
 MFG. STANDARD : BS 5163 (EN 558-1), EN1092-2



STRAINER : Y-Type, Straight Flow, Foot valve with Strainer, Basket
 SIZE RANGE : DN50 – DN250
 PRESSURE RATING : PN10, PN16
 GASKET : NBR
 MOC : Ductile Iron
 MFG. STANDARD : BS 5163 (EN 558-1), EN1092-2



FOOT VALVE : Flange Foot type with Strainer
 SIZE RANGE : DN50 – DN300
 PRESSURE RATING : PN10, PN16, PN25
 GASKET : EPDM, NBR
 MOC : Ductile Iron
 COATING : 300µm FBE coating
 MFG. STANDARD : BS 5163 (EN 558-1), EN1092-2



PLUG VALVE : Metal Seated, Eccentric Type, Lined
 SIZE RANGE : DN50 – DN300
 PRESSURE RATING : #150, #300
 MOC : Ductile Iron, WCB, CF8M
 FACE TO FACE : BS 5163 (EN 558-1 Series 3) , DIN 3352 F4 , AWWA C 515
 COATING : 300µm FBE coating
 END CONNECTION : Flanged Ends, Screwed Ends, Spigot Ends.



AIR RELEASE VALVE : Single Orifice, Double Orifice, Sewerage, Large Orifice.
 SIZE RANGE : DN50 – DN250
 PRESSURE RATING : PN10, PN16, PN25
 GASKET : EPDM
 MOC : Ductile Iron
 COATING : 300µm FBE coating
 MFG. STANDARD : BS 5163 (EN 558-1), EN1092-2



KNIFE GATE VALVE : Resilient Seated, Metal Seated, Uni-Flow, Dual Flow
 SIZE RANGE : DN40 – DN1200
 PRESSURE RATING : PN16, #150
 SEAT : EPDM / METAL SEATED
 MOC : Ductile Iron, SS316, Special MOC on request



DI PUDDLE PIPES & FITTINGS



Double Socket Bends, K12/K14
Nominal Size : 80mm - 2200mm



Double Socket Concentric Tapers
K12/K14, Nominal Size : 80mm - 1800mm



All Socket / Flange on Double Socket Tees
K12/K14, Nominal Size: 80mm - 1800mm



All Colars, K12/K14
Nominal Size : 80mm - 1800mm



Double Socket Invert Tee with Flanged Branch
K12/K14, Nominal Size : 200mm - 1800mm



Caps, K12/K14
Nominal Size : 80mm - 1800mm



Plugs, K12/K14
Nominal Size : 80mm - 1800mm



Bellmouth, K12/K14
Nominal Size : 80mm - 1800mm



Flange Spigot & Socket, K12/K14
Nominal Size : 80mm - 1800mm



Blank Flange, K12/K14
Nominal Size : 80mm - 2400mm



Double Flanged Bend, K12/K14
Nominal Size : 80mm - 1800mm



Double Flanged Duckfoot Bend, K12/K14
Nominal Size : 80mm - 1800mm



Double Flanged Tapers, K12/K14
Nominal Size : 80mm - 1800mm



All Flanged Tee, K12/K14
Nominal Size : 80mm - 1800mm



Double Flanged Puddle Pipe, K12/K14
Nominal Size : 80mm - 2200mm



UNITECHTM

DI PIPES & FITTINGS MFG.

FACTORY

Unitech DI Pipes & Fittings Mfg. LLP
Plot 41-42, Vill Dhadha, P.O Hazra Jalandhar, Punjab - 144025 - INDIA

UAE

OMAN

QATAR

KUWAIT

KSA

JORDAN

BAHRAIN

CANADA

Ajman

Shed No-05, Al Jurf Industrial Area-2
P.O.Box: 8047, Ajman, UAE
Tel: +971 6 7447465
Fax: +971 6 7447465

Abu Dhabi

UNITECH GENERAL TRADING LTD.
Building No 280, Taweelah
Abu Dhabi, UAE

Canada

M/s Unitech DI Pipes & Fittings Mfg. Inc.
822 56e Avenue
Montreal (Quebec) H8T3C2
Canada